

# COLORS



Dark Silver



Champagne Gold



Black

# SPECIFICATIONS

Model Name	FUJIFILM X-T100	
Number of effective pixels	24.2 million pixels	
Image sensor	23.5mmx15.7mm (APS-C) CMOS with primary color filter	
Sensor Cleaning system	Ultra Sonic Vibration	
Storage media	SD Card (-2GB) / SDHC Card (-32GB) / SDXC Card (-256GB) UHS-I*	
File format	Still image	JPEG (Exif Ver 2.3 <sup>2</sup> ) 14bit RAW (RAF format) / RAW+JPEG (Design rule for Camera File system compliant, DPOF-compatible)
	Movie	Movie File Format: MOV Movie Video Compression: H.264 Audio: Linear PCM Stereo
Number of recorded pixels	L:	<3:2>6000x4000 <16:9>6000x3376 <1:1>4000x4000
	M:	<3:2>4240x2832 <16:9>4240x2384 <1:1>2832x2832
	S:	<3:2>3008x2000 <16:9>3008x1668 <1:1>2000x2000
Lens mount	FUJIFILM X mount	
Sensitivity	Standard Output	AUTO1 / AUTO2 / AUTO3 (up to ISO6400) / ISO200 to 12800 (1/3 step)
	Extended output	ISO100 / 25600 / 51200
Exposure control	TTL 256-zones metering, Multi / Spot / Average	
Exposure mode	P (Program AE) / A (Aperture Priority AE) / S (Shutter Speed Priority AE) / M (Manual Exposure)	
Exposure compensation	-5.0EV - +5.0EV, 1/3EV step (movie recording: -2.0EV - +2.0EV)	
Face/Eye Detection	Yes	
Shutter type	Focal Plane Shutter	
Shutter speed	Mechanical Shutter	4sec. to 1/4000sec. (P mode), 30sec. to 1/4000sec. (All modes) Bulb mode (up to 60min.), TIME: 30sec. to 1/4000sec.
	Electronic Shutter <sup>3</sup>	4sec. to 1/32000sec. (P mode), 30sec. to 1/32000sec. (All modes) Bulb mode (1sec. fixed), TIME: 30sec. to 1/32000sec.
	Mechanical + Electronic Shutter	4sec. to 1/32000sec. (P mode), 30sec. to 1/32000sec. (All modes) Bulb mode (up to 60min.), TIME: 30sec. to 1/32000sec.
	Synchronized shutter speed for flash	1/180 sec. or slower
Continuous shooting	Approx. 6.0fps (JPEG: max. approx. 26 frames) Approx. 3.0fps (JPEG: max. up to card full) *Use a card with UHS Speed Class 1. *The frame rate and number of frames per burst may vary depending on the type of memory card used.	
Self-timer	2sec. / 10sec. / Smile / Buddy (LV.1 - LV.3) / Group (1-4 subjects) / Face Auto Shutter	
Flash	Manual pop-up flash (Super Intelligent Flash) Guide number: Approx 5 (ISO100-m) / Approx 7 (ISO200-m)	
Viewfinder	0.39-in., Approx. 2,360K-dot OLED color viewfinder, Coverage of viewing area vs. capturing area: Approx. 100% Eye point: Approx. 17.5mm (from the rear end of the camera's eyepiece), Diopter adjustment: -4m - +2m <sup>1</sup> (dpt) Magnification: 0.62x with 50mm lens (35mm format equivalent) at infinity and diopter set to -1m <sup>1</sup> . Diagonal angle of view: Approx. 30° (Horizontal angle of view: Approx. 25°) Built-in eye sensor	
LCD monitor	3.0-inch, aspect ratio 3:2, approx. 1,040K-dot 3 way Tilt-type, TFT color LCD monitor	
Movie recording	4K 3840x2160 15P, Continuous recording: up to approx. 30min. Full HD 1920x1080 59.94p / 50p / 24p / 23.98p, Continuous recording: up to approx. 30min. HD 1280x720 59.94p / 50p / 24p / 23.98p, Continuous recording: up to approx. 30min. High Speed Movie 1280x720 1.6x / 2x / 3.3x / 4x, Continuous recording: up to approx. 7min. *For 4K movie recording, use a card with UHS Speed Class 3 or higher. *Although movie recording will continue without interruption when the file size reaches 4GB, subsequent footage will be recorded to a separate file which must be viewed separately.	
Touch screen	Shooting Mode	Touch Shooting, AF, Focus Area, OFF, Touch Function, EVF Touch Screen Area Settings (ALL, RIGHT, LEFT, UPPER RIGHT, UPPER LEFT, LOWER RIGHT, LOWER LEFT, OFF)
	Playback Mode	Swipe, Zoom, Pinch-in / Pinch-out, Double-tap, Drag
Wireless transmitter	Standards	IEEE 802.11b/g/n (standard wireless protocol)
	Access mode	Infrastructure
	Encryption	WEP/WPA/WPA2 mixed mode
Bluetooth®	Standards	Bluetooth Ver. 4.1 (Bluetooth low energy)
	Operating frequency	2402 - 2480MHz (Center frequency)
Terminal	Digital interface	USB 2.0 High-Speed / micro USB terminal *connectable with Remote Release RR-90 (sold separately)
	HD output	HDMI Micro connector (Type D)
	Other	2.5m, stereo mini connector (Microphone)
Dimensions	121.0mm (W) x 83.0mm (H) x 47.4mm (D) / 4.8in. (W) x 3.3in. (H) x 1.9in. (D) (Minimum depth: 33.4mm / 1.3in.)	
Weight	Approx. 448g / 15.8oz. (including battery and memory card) Approx. 399g / 14.1oz. (excluding accessories, battery and memory card)	
Operating Temperature	0 - 40°C / 32-104°F	
Operating Humidity	10 - 80% (no condensation)	
Power supply	NP-W126S Li-ion battery (included)	
Battery life for still images <sup>4</sup>	Battery life for still images <sup>4</sup>	Approx. 430 frames (Normal Mode) When XF35mmF1.4 R is set.
	Actual battery life of movie capture <sup>4</sup>	4K: approx. 90min., Full HD: approx. 100min. *Face detection is set to OFF
	Continuance battery life of movie capture <sup>4</sup>	4K: approx. 150min., Full HD: approx. 170min. *Face detection is set to OFF
Starting up period	Approx. 0.4sec., when High Performance mode set to ON Approx. 0.8sec., when High Performance mode set to OFF *Fujifilm research	
Accessories included	Li-ion battery NP-W126S, AC power adapter, Plug Adapter, USB cable, Shoulder strap, Body cap, Detachable grip, Owner's manual	

\*1 Please see the Fujifilm website ([http://www.fujifilm.com/support/digital\\_cameras/compatibility/card/x/](http://www.fujifilm.com/support/digital_cameras/compatibility/card/x/)) to check memory card compatibility.  
\*2 Exif 2.3 is a digital camera file format that contains a variety of shooting information for optimal printing.  
\*3 The Electronic Shutter may not be suitable for fast-moving objects. Flash can not be used.  
\*4 Approximate number of frames that can be taken with a fully-charged battery based on CIPA standard.

**FUJIFILM**  
Value from Innovation

**X-T100**



more info.  
<http://fujifilm-x.com/x-t100/>

**FUJIFILM**

To ensure correct usage, read owner's manual carefully before using your equipment.  
All photos, illustrations, drawings and other images in this brochure are intended for illustrative purposes only.  
For more information, please visit our website [http://www.fujifilm.com/products/digital\\_cameras/index.html](http://www.fujifilm.com/products/digital_cameras/index.html)

•Specifications are subject to change without notice ©2018 FUJIFILM Corporation



SHOW  
ME  
YOUR  
WORLD

For some people, a day is just like any other day. For you, every day is unique. Only you can capture your story as you see it. Every moment is a memory waiting to be captured. The FUJIFILM X-T100 is your companion in everyday life, letting you document your day through photography.



# PHOTOGRAPHY EVERYDAY

Having a camera with you at all times changes your perception of things. Always looking for that next perfect subject to shoot. It naturally enhances your curiosity. Take the X-T100 with you and add some creativity to your daily life.

## ELECTRONIC VIEWFINDER

Excellent resolution, High-magnification EVF

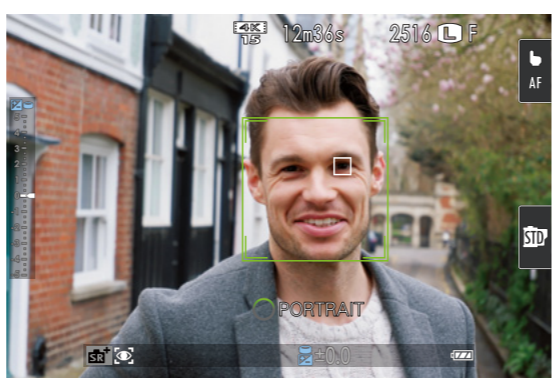
The high performance EVF in the retro body allows you to compose your photographs clearly, even in bright sunshine. This experience is the true feeling of photography. Only an electronic viewfinder allows you to see exactly what your final result will be before you take the picture.



## SR AUTO MODE

Scene & Subject Recognition

Advanced SR Auto mode recognizes the scene and the subject you are looking at and automatically optimizes camera setting and focus. It lets you take the best photos possible with minimal effort.



## COMPACT LENS

Small, retracting zoom lens



XC15-45mmF3.5-5.6 OIS PZ

With its comprehensive focal range, 3 stops effective optical image stabilization and 5cm close focus, the XC15-45mmF3.5-5.6 OIS PZ lens allows you to shoot a wide variety of photographs.



## RETRO & LIGHTWEIGHT

Compact, classic body

With its portability, lightweight 448g body and retro styling, the X-T100 can be taken anywhere and everywhere in your daily life.



# NEVER MISS A MOMENT

We always want to take the best possible pictures with those who are special to us. The X-T100 helps you to do this.



## 3 WAY TILT LCD

A three way tilt LCD monitor with selfie mode

The 3.0 inch LCD monitor is able to flip horizontally and tilt vertically. The horizontal flip is essential for taking self portraits in both stills and video modes. The vertical tilt is useful when you want to take pictures low down or up above. With the addition of touch control and self-timer modes, X-T100 has a variety of shooting options.



## IMAGE QUALITY

Color reproduction & Noise handling & Excellent resolution

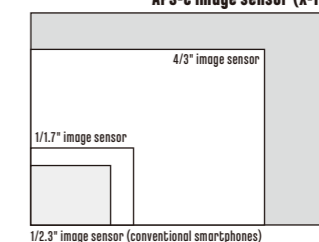
X-T100 has the essential elements to make all aspects of your pictures look special: natural skin tone, beautiful color reproduction, low noise in poor light, and excellent edge-to-edge resolution. You can trust exceptional images will be produced thanks to FUJIFILM's technology which is established from over 80 years in the photo industry.

## LARGE IMAGE SENSOR

Outstanding results

X-T100 is equipped with an APS-C sized image sensor which is 14 times larger than the sensor inside conventional smartphones. This is essential for capturing better quality images in low light and creating beautiful background defocus effect known as bokeh.

APS-C image sensor (X-T100)

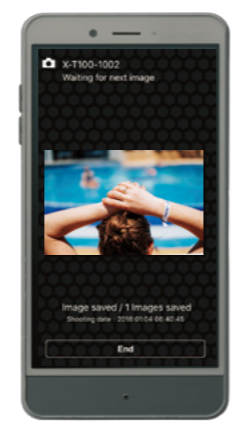




# FEATURE

## WIRELESS CONNECTIVITY

You can pair the X-T100 to a compatible smartphone or tablet using Bluetooth® for seamless transfer of your images so they can easily be shared with friends.



## FILM SIMULATION

Replicate the look of classic film with a variety of FUJIFILM's unique Film Simulation modes.

- PROVIA (Standard)
- CLASSIC CHROME
- MONOCHROME +Ye/R/G filter
- Velvia (Vivid)
- PRO Neg. Hi
- SEPIA
- ASTIA (Soft)
- PRO Neg. Std



## ADVANCED FILTER

Add an artistic touch and bring out the best side of your subject with in-camera Advanced Filters.

- Toy Camera
- Fish-eye
- Soft Focus
- Miniature
- Dynamic Tone
- Partial Color (Red/Orange/Yellow/Green/Blue/Purple)
- Pop Color
- HDR Art
- High-key
- Low-key
- Cross Screen
- Fog Remove



## SUPER INTELLIGENT FLASH

The flash automatically adjusts the amount of light released according to shooting scenes, letting you take natural-looking photographs.



## MULTI FOCUS

Multi Focus mode adds multi images together to generate a sharp image with amazingly deep depth of field.

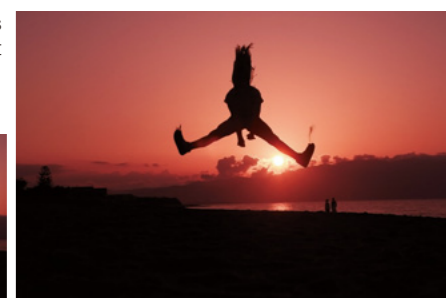
## 4K MOVIES

Capture the world around you in ultra high definition with 4K movie, bringing the atmosphere and emotion of a scene to life.



## 4K BURST SHOOTING

High resolution, high-speed continuous shooting lets you record fast-moving objects. Choose the best shot from the 15 frames taken in a second.





X-T100 features an elegant design and special anodized coating giving it the classic cameras feel. If you plan to use a camera everyday to capture precious moments, it must look as good as the images it produces. The X-T100 is the perfect camera that delivers total satisfaction in style, quality, and handling.

# X-T100

# STYLE

### FUNCTION DIAL

The function dial allows intuitive, simple adjustment of the shooting settings. In the "DEFAULT" setting, the dial is automatically assigned to the best options for each shooting mode.



### DETACHABLE GRIP

Improve the handling of the X-T100 by using the detachable grip.



### 3 WAY TILTING TOUCHSCREEN

A 3.0 inch LCD monitor can tilt in 3 different ways and also has touch screen capability. Touch operation includes pinch zoom, drag to move around the image and additional functions using flick gestures.



### MODE DIAL

Change your shooting mode quickly using the conventional mode dial. Select from SR+, Program AE, Aperture Priority, Shutter Priority or fully manual.

### BATTERY NP-W126S

A powerful battery capable of 430 shots with one charge.



# LENS

## XF LENS ZOOM LENS



**XF10-24mmF4 R OIS** Wide angle zoom lens with the constant aperture of F4, making it ideal for landscape shots  
**XF16-55mmF2.8 R LM WR** Professional zoom lens with an F2.8 aperture throughout the range for ultimate creativity  
**XF18-55mmF2.8-4 R LM OIS** Premium lightweight and compact zoom  
**XF18-135mmF3.5-5.6 R LM OIS WR** All-weather super-zoom that's suitable for a wide range of subjects  
**XF55-200mmF3.5-4.8 R LM OIS** Telephoto zoom lens ideal for bringing far away subjects closer  
**XF50-140mmF2.8 R LM OIS WR** Professional telephoto zoom designed for maximum creativity  
**XF100-400mmF4.5-5.6 R LM OIS WR** Ultra-telephoto professional zoom with five-stop image stabilization

## XC LENS ZOOM LENS



**XC15-45mmF3.5-5.6 OIS PZ** A compact lightweight electronic zoom lens  
**XC16-50mmF3.5-5.6 OIS II** Everyday standard zoom with excellent performance  
**XC50-230mmF4.5-6.7 OIS II** 4.6x zoom covering a wide range of shooting options

### TELECONVERTER



**XF1.4X TC WR** Enhance the reach of selected XF lenses by 1.4 times  
**XF2X TC WR** Enhance the reach of selected XF lenses by 2 times

### MOUNT ADAPTER



**M MOUNT ADAPTER** Converts M Mount lenses to be used on X Mount cameras

## XF LENS PRIME LENS



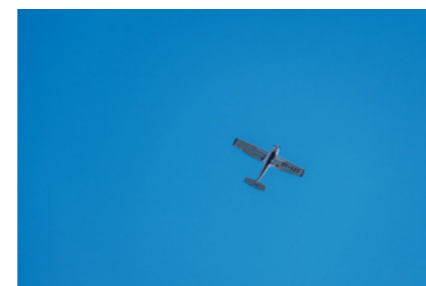
**XF14mmF2.8 R** Super wide angle lens with excellent edge-to-edge sharpness  
**XF16mmF1.4 R WR** Dust and weather-resistant wide angle lens with fast aperture  
**XF18mmF2 R** Compact lens that you can keep with you at all times  
**XF23mmF1.4 R** Combines creamy bokeh with a natural angle of view  
**XF23mmF2 R WR** Compact lens delivering premium image quality and a natural angle of view  
**XF27mmF2.8** Lightest lens in the series, perfect for everyday use  
**XF35mmF1.4 R** Standard lens that is super sharp even at its widest aperture  
**XF35mmF2 R WR** Stylish and lightweight standard prime lens  
**XF50mmF2 R WR** A mid-telephoto lens with a compact lightweight design  
**XF56mmF1.2 R** Tack sharp focus and ability to produce beautiful bokeh effect  
**XF56mmF1.2 R APD** Creamy bokeh effect thanks to additional APD filter  
**XF60mmF2.4 R Macro** High quality macro lens giving 1:2 magnification in a compact size  
**XF80mmF2.8 R LM OIS WR Macro** A mid-telephoto 1:1 magnification macro lens  
**XF90mmF2 R LM WR** Portrait lens with exceptional bokeh at its widest apertures



XC15-45mmF3.5-5.6 OIS PZ



XC15-45mmF3.5-5.6 OIS PZ



XC50-230mmF4.5-6.7 OIS II



XF18-135mmF3.5-5.6 R LM OIS WR



XF35mmF1.4 R



XF50mmF2 R WR